

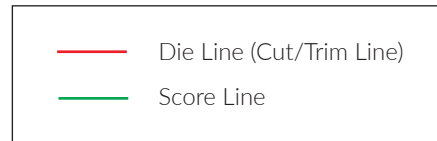
Please read this document before editing our template

Pocket and Sleeve Template Instructions

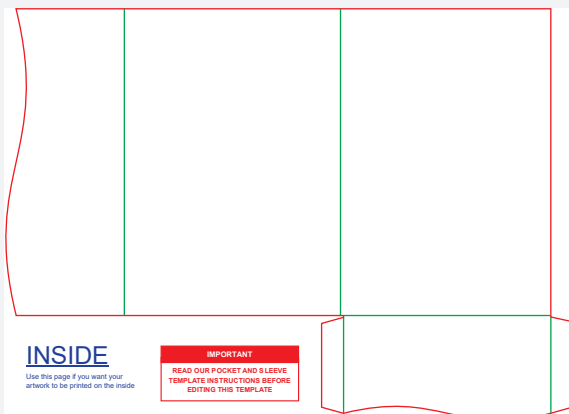
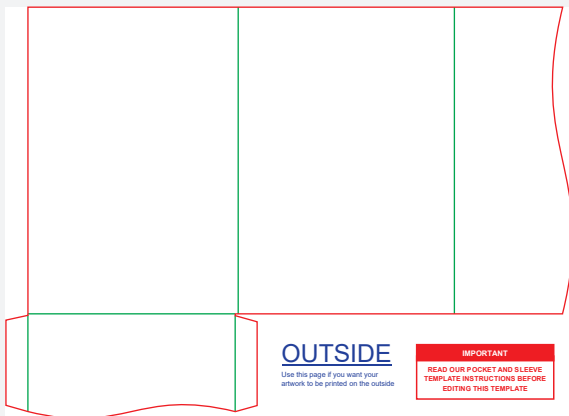
1. Choose page one or two depending on what side of the pocket you want printed.
2. Place your artwork on our template
3. Add 5mm bleed if required
4. Do not place artwork on glue flaps
5. All important text and graphics need to be at least 5mm from the edge of the pocket (cut line)
6. We DO NOT recommend printing on the score area.
7. PDF a mockup (your artwork with our template)
8. Remove our template
9. PDF your artwork ready for printing (without our template).

WE NEED 2 FILES OR A TWO-PAGE PDF WITH:

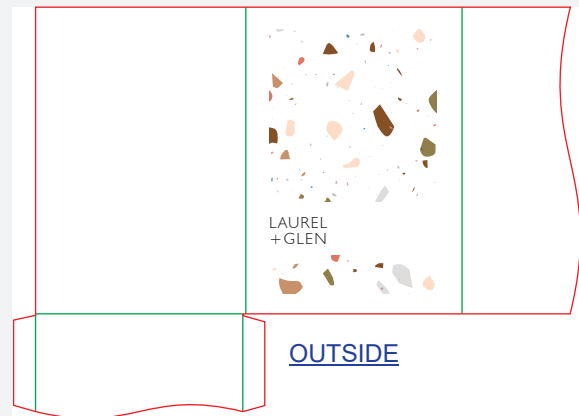
1. Your artwork placed on our template
2. Your artwork without our template (same page size as our template NOT panel size).



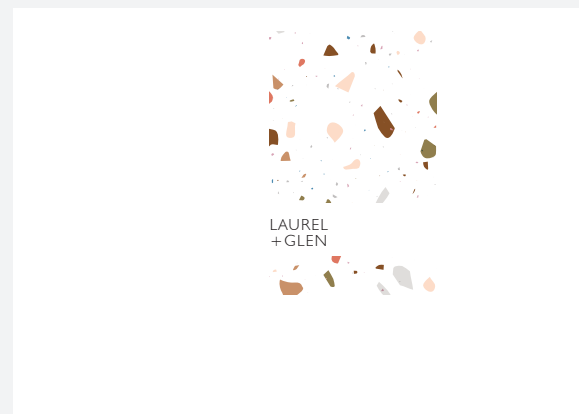
WHAT YOU GET



WHAT WE NEED FOR PRINTING



Mockup



Print File

